

# DELTA FXT PRO SOFTWARE MT4

## System Manual

### Risk warning

Before you begin trading on Real account please carefully consider your investment goals, risk and experience you have. It should be noted that Forex is a leverage based market. It should be remembered that leverage can work both in your advantage and disadvantage as well. Therefore there is high risk of losing a part or all of your financial input placed on your account and because of that you should remember to trade with the amount of money which you can lose without taking any influential financial damage.

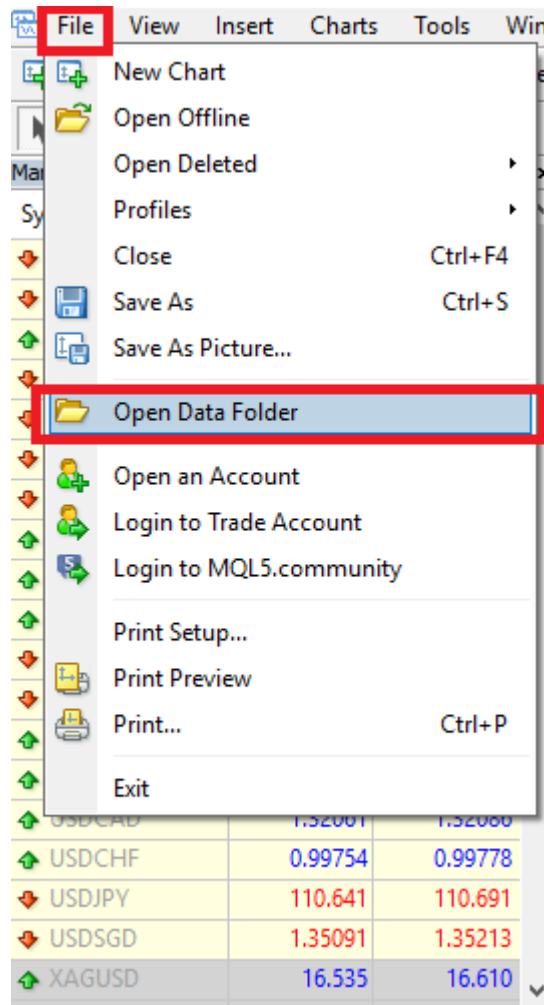
**Disclaimer** Signals generated by the system are not investment recommendations. All materials included on the website, as well as all system components (indicators, instruction manual) are for educational purposes only. Creators of the system will not take any responsibility for any profit or loss/damage caused by using the system.

Copyright © 2026 [www.deltafx.com](http://www.deltafx.com) All rights reserved.

Unless otherwise indicated, all materials on these pages are copyrighted. All rights reserved. No part of these pages, either text or image may be used for any purpose other than personal use. Therefore, reproduction, modification, in any form or by any means, electronic, or otherwise, for reasons other than personal use, is strictly prohibited without prior written permission.

# 1. Installation proces.

- Open your MT4
- Click 'File/Open Data Folder' from the top tab.



- Copy templates files to the 'Templates' folder.

config	15.06.2018 14:09
history	08.05.2018 16:03
logs	16.06.2018 09:40
MQL4	08.05.2018 16:01
profiles	13.06.2018 10:20
templates	15.06.2018 22:52
tester	13.06.2018 10:44
origin	08.05.2018 16:01

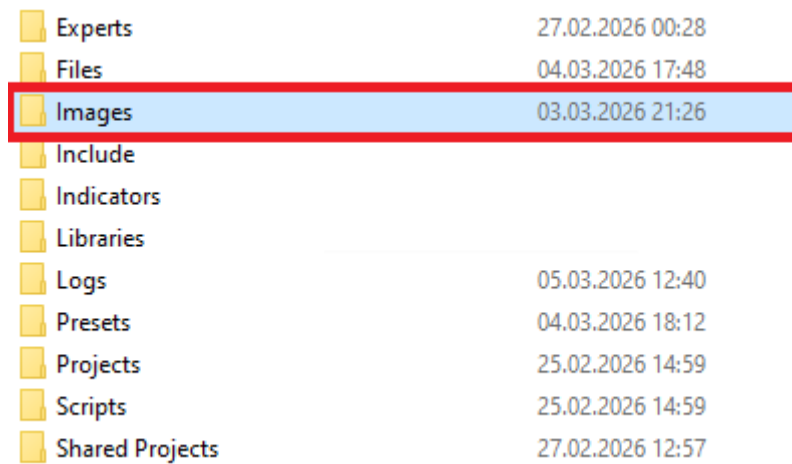
- Copy indicator files to the 'MQL4>Indicators' folder.

Experts	08.05.2018 16:02
Files	08.05.2018 16:01
Images	08.05.2018 16:01
Include	08.05.2018 16:01
Indicators	15.06.2018 22:29
Libraries	08.05.2018 16:02
Logs	16.06.2018 09:40
Presets	08.05.2018 16:01
Projects	08.05.2018 16:01
Scripts	08.05.2018 16:02

- Copy expert file to the 'MQL4>Experts' folder.

Experts	08.05.2018 16:02
Files	08.05.2018 16:01
Images	08.05.2018 16:01
Include	08.05.2018 16:01
Libraries	08.05.2018 16:02
Logs	16.06.2018 09:40
Presets	08.05.2018 16:01
Projects	08.05.2018 16:01
Scripts	08.05.2018 16:02

- Copy images files to the 'MQL4>Images' folder.



Experts	27.02.2026 00:28
Files	04.03.2026 17:48
Images	03.03.2026 21:26
Include	
Indicators	
Libraries	
Logs	05.03.2026 12:40
Presets	04.03.2026 18:12
Projects	25.02.2026 14:59
Scripts	25.02.2026 14:59
Shared Projects	27.02.2026 12:57

- Restart your MT4, open your favourite chart. Press the right mouse button and pick template:
  - DeltaFXT – standard system template
  - DeltaFXT(LW) – light weight template.

**TIP: Software is using advanced graphics display. In case if you notice any slower trading platform performance on your PC, please consider using 'light weight' template. It provides the same signals and data analysis with a bit simplified graphic display.**

Trading modes can be changed on the chart.

**HF SCALPING (high frequency) – recommended TF: M1**

**SD SCALPING (standard scalping) – Recommended TF: M1, M5**

**FS DAYTRADING (fast daytrading): Recommended TF: M5 / M15**

**SD DAYTRADING: Recommended TF: M5/M15/M30**

## ENTRY RULES

Signals are very easy to spot. Depending on the chosen trading mode, software provides trend calculation (red line in the middle of the screen). This represents visual market direction.

Signals should be taken using simple rule:

- Price is above line: take BUY signals only



- Price is below line: take SELL signals only



## DOUBLE TREND CONFIRMATION

If you want to get additional market confirmation of the signal, we can use simple method provided with Delta software.

Let's say you can see this picture. Fast mode, signals to the down and then up. Which are safer and in line with the bigger trend?



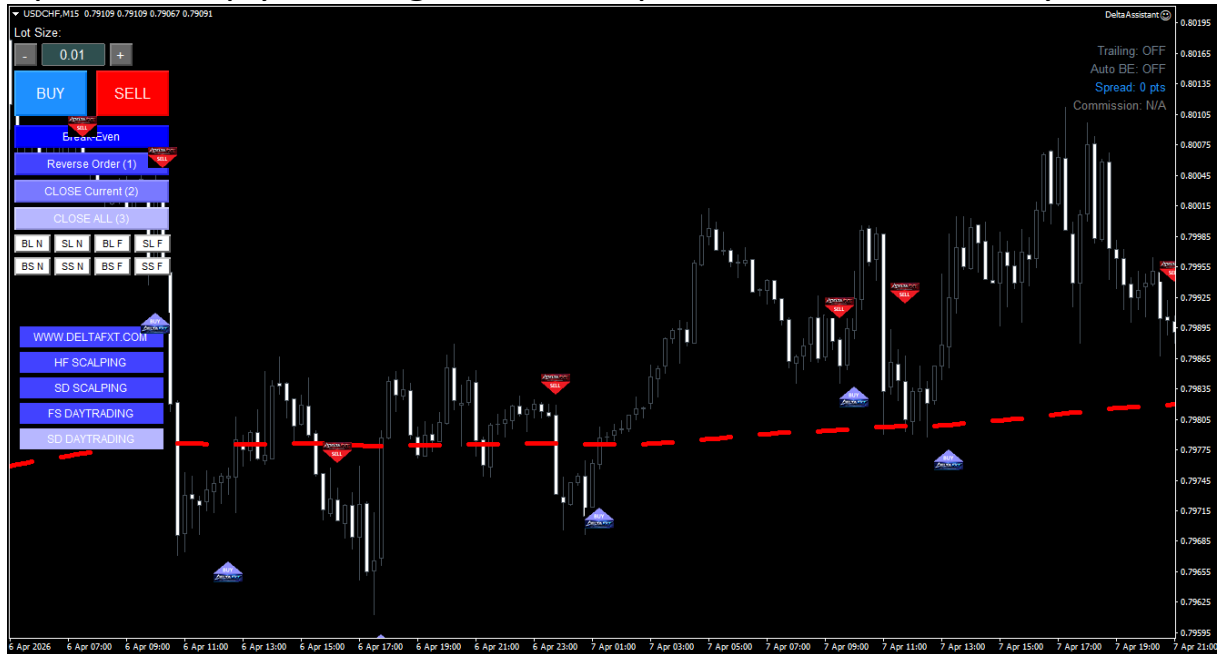
Just switch the mode to the slower one and you will see that sell signals were pullback trades in the bigger UP trend. Buy signals were safer option with more profit potential.



## FLAT MARKET

Delta software will help you also recognize flat market.

- red trend line is flat
- price is simply crossing trend line up and down without any reaction



## TRENDING MARKET

- Price is respecting the trend line
- Price is clearly on one side of the trend line
- Trend line is sloped to the UP or DOWN



## STOP LOSS

Stop loss should be placed:

- Below the last swing low for BUY trades
- Above the last swing high for SELL trades

## TAKE PROFIT

Take profit should be placed:

- $R:R=1:1$  when market is normal (low or standard volatility)
- $R:R=2:1$  when market is fast (high volatility)
- Opposite arrow



## ADVANCED SETTINGS

Software comes with four predetermined modes which is enough for most traders, but you can also additionally tweak the settings to your liking.

### **Entry indicator (arrows).**

'Risk' feature allows for making signals appear faster (more aggressive) or slower (more conservative).

Recommended values:

Fast scalping: 4-7 (if you want really fast entries)

**Default 'risk' value is set to 10, which is balanced value for all trading styles.**

Conservative daytrading: 12 (if you want a less number of signals signals).

'X1, X2' numbers allows for additional signal tweak.

**Default values: X1=40, X2=20.**

Faster (more aggressive) entries: X1=30, X2=17

Slower (more conservative) entries: X1=60, X2=30

## **Expert Assistant**

Software comes also with expert assistant that will make managing your trades much easier.

Lot Size: change your lot with + and –

BUY / SELL: Open market order

Break-Even: Secure your profit

Reverse order: quickly switch from BUY to SELL or SELL to BUY

Close current: Close all trades (both market and pending) on current chart

Close ALL: Close all trades (both market and pending) on all trading instruments

BL N – Buy limit order (near) (adjustable in settings)

BS N – Buy Stop order (near) (adjustable in settings)

SL N - Sell limit order (near) (adjustable in settings)

SS N – Sell Stop order (near) (adjustable in settings)

BL F – Buy limit order (far) (adjustable in settings)

BS F – Buy Stop order (far) (adjustable in settings)

SL F - Sell limit order (far) (adjustable in settings)

SS F – Sell Stop order (far) (adjustable in settings)

Adjustable in the expert settings:

- SL / TP values (percentage)

- Auto Break Even (true/false)

- Trailing Stop (true/false/percentage)

- HOT KEYS

- Pending orders (percentage)

- Display values

- Visual (buttons, colors)

If you need any assistance let us know!

[support@deltafx.com](mailto:support@deltafx.com)